

2021 Annual General Meeting

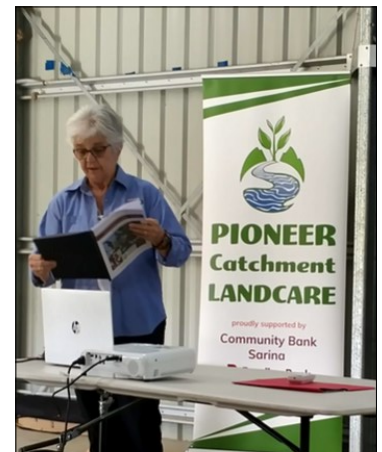
PCL held its AGM at Rowallan Park last week, at which the organisation thanked and farewelled two very long term committee members, Deputy Chairperson Di Williams and former Chairperson Dave Hunter. Both have held a variety of roles in the management committee over the many years of service they have given. We deeply thank Di and Dave for their service and wish them, and their families, all the very best for the future.

Many thanks to long-time member and past chairperson Margaret Lane for once again chairing the AGM. It is always valuable to have someone on board with a long knowledge of our group.

Following presentation of President and Financial reports, committee elections were held. Sharon Dwyer will continue as Chairperson, and Fran Mann will remain Secretary into 2022, with Judith Wake stepping into the Deputy Chairperson role. PCL welcomes Earl Neilsen as a new committee member. The Treasurer position remains vacant for the interim, and we would welcome any volunteers for this important role. We also welcome anyone interested in taking on general committee roles to support this valuable community organisation.

Volunteer of the Year was awarded to Jenny White, who makes a great contribution to PCL, as a regular volunteer at the nursery and on site re-veg projects, guided walks and a regular Gardens for Wildlife contributor to our newsletter. Jenny wasn't able to attend the meeting, and was presented her gift birdbath and certificate on her return from holiday.

Reef Assist Program team member Sabrina Black presented an excellent overview of the program and the work of the team, which also includes Darrell Barba. The meeting was followed by a staff planting of a selection of native plants at the margin of the parade ground in the beautiful district Scout Camp.



Pollinating young minds

PCL has collaborated with Mackay Regional Botanic Gardens to present a successful Pollinator Week Walk and Workshop event.

Presented by PCL Project support Officer Hannah Murphy and MRBG Visitor Services Officer Kimberley Blythe, the fully-booked event was held on November 12. Hannah and Kimberley took 12 children aged 4-10 on a fun exploratory guided walk looking for pollinators inhabiting the botanic gardens, and investigating the plants they are attracted to.

Children then created an insect hotel from natural and re-cycled materials to take home and install in their own garden, along with a free native plant grown at Mackay Natural Environment Centre nursery.

Native Frangipani**Family: Pittosporaceae**

This medium to tall rainforest tree with slender upright habit and branches in widely spaced whorls is flowering now. The beautiful perfume is reminiscent of the exotic Frangipani tree.

Leaves: Alternate, short stalked, soft, thin- textured; 8-16cm long, broadest above the middle and tapering to a fine point at the apex.

Flowers: Five-petalled tubular, about 250mm in diameter, borne in conspicuous terminal sprays in late spring. They are white or cream, darkening to yellow with age and are highly perfumed.

Fruits/Seeds: Fruits are somewhat pear-shaped two-valved brown capsules, 20-40 x 25-30mm, containing numerous glossy brown winged seeds stacked in laminated layers.

Distribution: Eastern coastal Australia from near Cooktown to the Sydney area; also in New Guinea. It occurs in wet sclerophyll forests and a variety of rainforest types, including riverine forest in this area. It can be seen flowering at Eungella in the Sky Window picnic area and in the Mackay Regional Botanic Gardens .

Sources: *Mackay Branch of the Society for Growing Australian Plants (now Native Plants Queensland-Mackay Branch): 101 Trees of Mackay (1989: Mackay); Cooper & Cooper : Fruits of the Australian Tropical Rainforest (2004: Nokomis Editions, Melbourne). Photo: S&A Pearson*

**Pest Spotting***Annona glabra***Pond Apple****Family: Annonaceae**

Originally from Central and South America, this semi-deciduous tree usually reaches to 3-6m, but up to 15m. Soft-wooded stems have a thin grey bark bearing conspicuous lens-shaped spots on the stem. It invades fresh, brackish and saltwater areas, drainage lines, as well as coastal dunes and islands. It has the potential to form dense stands in swampy areas, capable of replacing Melaleuca wetlands, mangroves and creek bank communities.

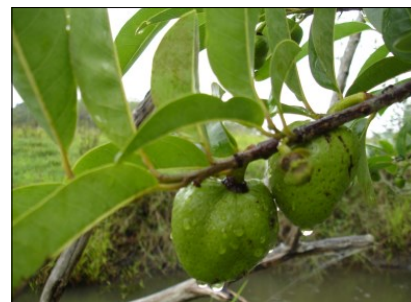
Leaves: Alternate, simple, light to dark green, 70-120mm long, prominent mid vein, distinct smell like green apples when crushed.

Flowers: Pale yellow to cream, red inner base; three leathery outer petals with three smaller inner petals, 20-30mm in diameter. **Fruits/Seeds:** Round fleshy 'berries', 50-150mm in diameter, green ripening orange-yellow then black after falling; containing 100-200 brown seeds, similar in size and shape to pumpkin seeds.

Spread by: Fruits and seeds dispersed by water, including sea currents; also animals, including pigs and birds. Pond Apple, in the same family as the Soursop, was introduced to Australia as grafting stock for commercially grown custard apples. It has historically been found, since 2008, in creek bank and mangrove communities in the Reliance Creek catchment and Melaleuca wetlands at Andergrove.

Control: Landholders should consider expanding the riparian vegetation along creek banks to help exclude the pest. There are a range of mechanical control methods suggested at by QLD DAF at www.business.qld.gov.au . This species is a Weed Of National Significance and is also Restricted Matter – Category 3 under the Biosecurity Act 2014. This means that it cannot be distributed or disposed of in any way.

Sources: *PCL Newsletter, July 2014, using Weeds of the Mackay Whitsunday Region (2013: Mackay Regional Pest Management Group; Mackay)*



Gardens for Wildlife : Re-Wilding Our Suburban Garden—Part 3 Sanctuary

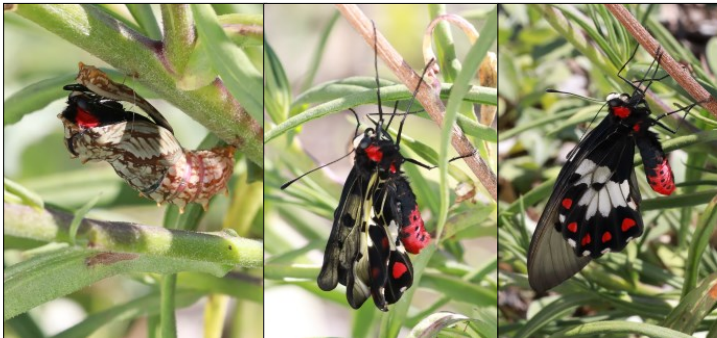
By Jenny White, PCL member and regular volunteer

This series has looked at the two-year process of re-wilding our family's sandy suburban block adjacent to Slade Point Reserve.

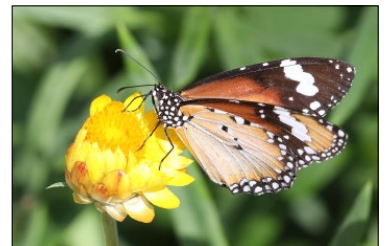
After going through the process of weed exclusion, building soil and mulching, by January 2021 our garden was thriving. It was alive and thriving with all sorts of life. To the delight of husband John and myself, on January 16, a Bush Stone Curlew with an injured leg stayed for three days to recover. With food, water and the sanctuary of our newly created garden, it was safe to sit, sleep and recover.



John and I hope you enjoy having a peek at the wildlife which we now live with in our everyday lives. You can't understate the value of being surrounded by a diversity of life, suburban wildlife: the pleasure of it is priceless.



RIGHT: A male Big Greasy Butterfly (*Cressida cressida*) emerges from its cocoon, sits on a branch of Yellow Daisy (*Xerochrysum bracteatum*) to dry out, then spreads its wings and takes its first flight. It was beautiful: I was speechless. BELOW: Butterflies abound, finding plenty of food enticing them to stop and for us to enjoy their comings and goings. From left: Blue Tiger (*Tirumala hamata*); Lesser Wanderer (*Danaus petilia*).



ABOVE & LEFT: Natural pest control at work in the Garden.

RIGHT: A gorgeous Blue-faced Honeyeater (*Entomyzon cyanotis*) takes a spell on Dryander's Grevillea (*Grevillea dryandri*).

Photos : Jenny White/ Shiller Images



Out and about with PCL

Wilderness Walking for Health and Wellbeing

New PCL Co-ordinator Nancy Pratt has introduced "Mental Health" activity days for staff. The first of these was held Friday, November 19, with the team choosing to take on the beauty of the 7km Cape Hillsborough–Smalley's Beach hike, followed by lunch at the nearby Old Station Teahouse



Upcoming Events

December

Thu 2 - Native Plants Queensland (Mackay Branch) meeting 7:30pm at Mackay Regional Botanic Gardens meeting room

Dec 4 - Birdlife Mackay District Bird count, various locations, followed by Birdcall & BBQ enq: 0407143823

Tue 7 - PCL Volunteering in the nursery. 8am to 12pm.

Sat 11 - Mackay Community Garden Abundance Day, 10am

Tue 14 - PCL Volunteering in the nursery. 8am to 12pm.

Fri 31 - Mackay Regional Botanic Gardens Survey on the Deck, 6am. Enq: 0411887546

Late Dec - Torresian Imperial Pigeon Count Salonika Beach. Enq: 0407143823

Dec 23-Jan 10: PCL office closed for **Christmas**

January

No January Native Plants Queensland (Mackay Branch) meeting. Next to be held February 3.

Jan 2 - Birdlife Mackay outing, Chelmans Rd Eungella, meet old Tourist Info Centre Nebo Road; enq: 0407143823

Tue 11 - PCL Volunteering in the nursery. 8am to 12pm.

Tue 18 - PCL Volunteering in the nursery. 8am to 12pm.

Thu 20 - Birdlife Mackay outing, Shellgrit Creek, meet Illawong Beach Resort; enq: 0407143823

Tue 25 - PCL Volunteering in the nursery. 8am to 12pm.

Fri 28 - Mackay Regional Botanic Gardens Survey on the Deck, 6:30am. Enq: 0411887546



**PCL'S ID:
C10041933**

Merry Christmas!

PCL wishes all our volunteers, members, friends, stakeholders and fellow conservation organisations, a peaceful and happy festive season, and a prosperous 2022. We thank you all for your support across 2021.

We will be closed December 23– January 9, and look forward to another year of getting our boots on the dirt and Landcaring!

Pioneer Catchment & Landcare Group Inc. Management Committee

Executive

Chair | Sharon Dwyer

Deputy Chair | Judith Wake

Secretary | Fran Mann

Treasurer | SOUGHT

Committee Members

Earl Neilsen

Pioneer Catchment & Landcare Group Inc. Office contacts:

Phone | 07 4944 1979

Email | admin@pioneercatchment.org.au

Website | www.pioneercatchment.org.au

Coordinator | Nancy Pratt
coordinator@pioneercatchment.org.au

Project Officer | Tahnee Hamill
projectofficer@pioneercatchment.org.au

Administration Officer | Sonja Ott
admin@pioneercatchment.org.au

Newsletter | communications@pioneercatchment.org.au

The Back Block.....

Pioneer Catchment Landcare held a landmark Strategic Planning workshop to help focus the future direction of our grassroots organisation. The workshop was attended by staff and management committee members, and was facilitated by respected community development professional Deb Rae. Outcomes from the day included the creation of clear vision, mission and core values statements, along with forward direction on some exciting organisational and environmental projects that will be revealed as they come to fruition. All present came away with clear tasks to undertake that will help make PCL more agile in creating and responding to opportunities. The workshop was funded by a Community Grant from Mackay Regional Council.

PCL Gets Strategic



OUR VISION:

To empower our community to build biodiverse ecosystems

OUR MISSION:

To implement an integrated, science-based approach to natural resource management through supportive partnerships across our catchment.

VALUES:

- ⊗ *We are innovative, and driven by action at a grassroots level* ⊗
- ⊗ *Ethical* ⊗ *Engaged* ⊗ *Passionate* ⊗

Pioneer Catchment & Landcare Group Inc. Proudly supported by:



Printed newsletters are on 100% recycled & carbon-neutral paper.