

# Pioneer Catchment & Landcare News

November 2022

*In the Field*

With the PCL Team

*Land for Wildlife*  
Creating Wildlife Corridors



**PEUS**

Keep up to date with PCL's recent and upcoming events!



Plant of the month -  
Golden Guinea Flower



Community Spotlight:  
Padaminka Reserve



Meet the Team -  
Sally Stutsel



**PIONEER**  
**Catchment**  
**LANDCARE**

**Our Mission**

To implement an integrated, science-based approach to natural resource management through supportive partnerships across our catchment

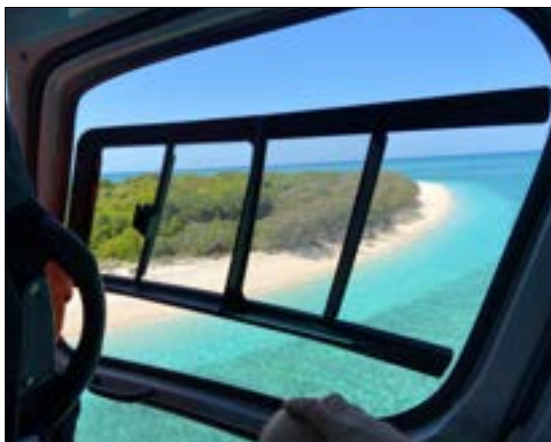


## In the Field with the PCL Team

*PCL Officers, Angus Mecoles and Darrell Barba, auditing litter at Harbour Beach and Pioneer River*



*PCL Officers visiting Bushy Island with Reef Catchments to assist with African Ant eradication*



*Above: PCL Officers attending Seagrass monitoring at St Helens Beach with Reef Catchments and Yuwi Aboriginal Corporation*

*Left: PCL Officer Angus Mecoles at Bushy Island, assessing damage to native vegetation*

Make sure to find us on Facebook at [www.facebook.com/PioneerCatchmentLandcare](https://www.facebook.com/PioneerCatchmentLandcare)

to keep up to date with PCL Projects and see how you can get involved!

### **OUR VISION:**

To empower our community to build biodiverse ecosystems

### **OUR MISSION:**

To implement an integrated, science-based approach to natural resource management through supportive partnerships across our catchment.

### **VALUES:**

- We are innovative, and driven by action at a grassroots level ◦
- Ethical ◦ Engaged ◦ Passionate ◦

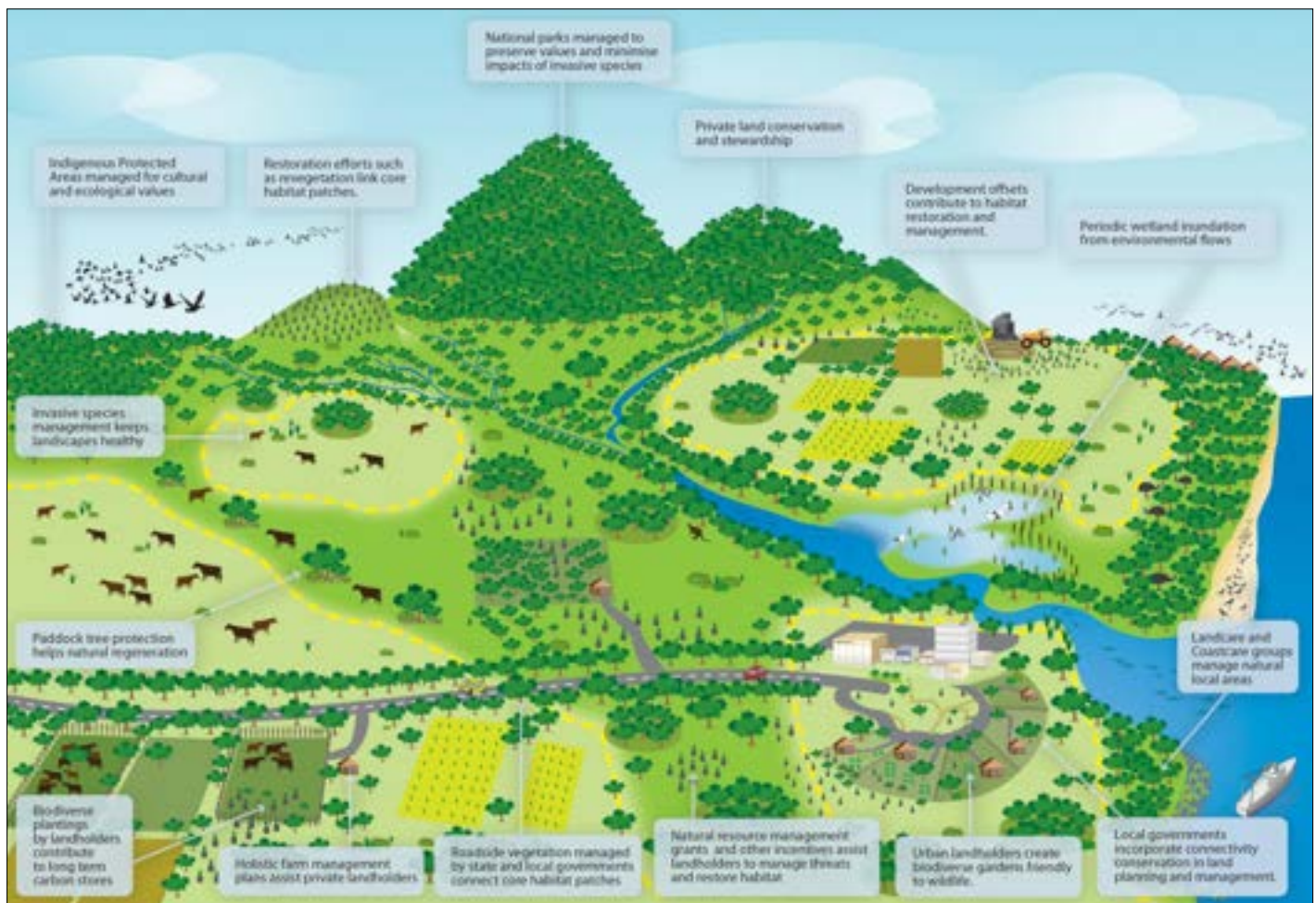
## Land for Wildlife: Creating Wildlife Corridors

Wildlife Corridors are valuable connections between areas of native vegetation that provide habitat and safe movement pathways for native wildlife. These corridors, which can be maintained through the protection and rehabilitation of native vegetation, are integral to the survival of local native wildlife populations. By protecting biodiverse ecosystems, we can also contribute to climate change resilience and improve carbon storage through revegetation projects.



Land for Wildlife properties play a key role in conserving core habitat and important connections, however, there are many ways to contribute to the connectivity of the natural landscape, from creating small nature refuge spaces and controlling invasive species on your property to creating 'buffer zones' for protected areas, landscape development offsets and biodiverse gardens in urban areas.

The below diagram by the Department of Climate Change, Energy, the Environment and Water depicts elements of a landscape that can contribute to wildlife corridors.



Creating large scale habitat connectivity and a more integrated landscape requires a whole of catchment view of land management. It's important to not only connect the community with their local environment, but also with their neighbours. When we share ideas for environmental protection with our local community members, we can expand the network of wildlife corridors across the landscape. Contributions to landscape connectivity, no matter how big or small, are all important actions towards building a more sustainable community for the future.

Sources: 'What are Wildlife Corridors?', Department of Climate Change, Energy, the Environment and Water, 2021, <<https://www.dceew.gov.au/environment/biodiversity/conservation/wildlife-corridors#:~:text=Landscape%20elements%20that%20contribute%20to%20wildlife%20corridors%20include%3A,paddock%20trees%20link%20larger%20patches>>



## Community Spotlight: Padaminka Nature Reserve

Padaminka Nature Reserve is a 72 hectare privately owned property in Greenmount that has been restored after past agricultural uses and is now preserved as a nature refuge and Land for Wildlife property. It contains significant wetland areas and endangered ecosystems, including *Eucalyptus platyphylla*, *Corymbia clarksoniana*, *Eucalyptus drepanophylla* and *Lophostemon suaveolens* woodlands. During restoration of the property, three consecutive flowing billabongs were developed that now host a diversity of native flora and fauna.

According to Wetlandinfo, the reserve is home to nearly 300 native animals including the agile rock wallaby and 181 species of birds.

Alongside the reserve, there is also a Koala rescue centre in which fodder trees from the reserve provide a much needed food supply for Koalas in care.



*Left: PCL Team helped to clear some areas overgrown with invasive grasses. Right: Billabong at the Reserve*

Source: Department of Environment and Science, Queensland (2013) Padaminka Nature Refuge — facts and maps, WetlandInfo website, <<https://wetlandinfo.des.qld.gov.au/wetlands/facts-maps/nature-refuge-padaminka-nature-refuge/>>.

## Keeping our reef beautiful starts in our rivers

On Tuesday 18th October, PCL held the Great Barrier Reef Clean Up in partnership with ReefClean, in which 34 volunteers were invited aboard a bus that took them to four of the Pioneer Catchment's freshwater recreational areas, while making new friends, sharing knowledge and (I think you'd agree) eating really well along the way. The day out was a proactive initiative to remove litter from the source before the arrival of the wet season thereby preventing it from entering the Great Barrier Reef. PCL staff audited the litter and found that 84.5 kg or 8.5 bags of litter plus numerous bulky items were retrieved. An amazing effort!

The bulk of the litter was mostly discarded lightweight food and beverage packaging and containers but sanitary items, cigarette butts and packaging, florist and celebration items, clothing, drug paraphernalia, a lawn mower, metal and some old signage and timber were also removed. All the metal items have now been sent for recycling courtesy of Mackay Regional Council. All the recyclable aluminium and glass containers will be recycled through the Containers for Change scheme.

**A huge thankyou to all who donated time and effort to make this event so successful!** PCL would like also like to express thanks and gratitude to: Reef Clean and Tangaroa Blue Foundation for funding the event; Mackay Regional Council and Yuwi Land and Sea Services for supporting the event and; Queensland Country Women's Association and Pinnacle Hotel for catering for this event.



**Golden Guinea Flower, Snake Vine****Family: Dilleniaceae**

A vigorous twining or scrambling vine. The plant is tolerant to a wide range of climates and habitats including rainforest and wet sclerophyll forest, 0-1600m altitude. Locally it occurs from beach fronts to high altitude areas. It has large yellow flowers that make it a popular choice for cultivation

**Leaves:** Simple, entire or sparsely toothed, 30-110 x 10-30mm; usually sessile and glossy green above with silky hairs below.

**Flowers:** Unpleasantly scented; yellow, solitary on ends of short branches, 50-70mm diam, with 5 open petals and numerous stamens about 10mm long; calyx green with lobes up to 25mm long; any month. Fruit: A capsule enclosing 3 to 5 brown carpels and surrounded by the remnants of the calyx lobes; diam. 30-40mm; seeds 3-7 per carpel, brown or black, 3-4mm long, enclosed in an orange or red aril. Fruits January to April. (Carpel = The structure within a flower which bears the ovules)

**Growing Notes:** Useful as a groundcover plant in sandy soils if nothing to climb. Responds to light pruning. Can tolerate a range of conditions including drought. Best flowers in a sunny position.

Sources: Fruits of the Australian Tropical Rainforests (2004) by Wendy Cooper. Gardening with Angus, <<https://www.gardeningwithangus.com.au/hibbertia-scandens-snake-vine/>>, [https://apps.lucidcentral.org/rainforest/text/entities/hibbertia\\_scandens.htm](https://apps.lucidcentral.org/rainforest/text/entities/hibbertia_scandens.htm)

Images: Steve & Alison Pearson.

**Pest Spotting***Macroptilium atropurpureum***Siratro****Family: Leguminosae (Papilionoideae)**

This perennial climber from Tropical America has rough hairy stems that can sprawl several metres and cover large areas. It can smother native vegetation and young trees. It is a problem in revegetation sites where it smothers natives before they can become established. Siratro has become common in coastal and sand dune vegetation. (It is a bred cultivar, released as a pasture legume in the 1960s.)

**Leaves:** Alternate pinnate with 3 leaflets, terminal leaflet ovate, 20-85 x 18-50mm, lateral leaflets similar in size but usually with 1-2 lobes on lower margin, apex pointed, base rounded to heart-shaped, dark green sparsely hairy above, dense silky white hairs below. Stipules triangular, 2-5mm long.

**Flower:** Showy, dark purple to almost black pea-flowers 6-12 crowded toward the tip of long axillary racemes; present most of the year.

**Fruit:** Straight, narrow, minutely hairy pods, 50-100 x 3-5mm, dark brown when mature, contain about 12-15 seeds. Seeds plump, more-or-less kidney shaped, brown flecked with black, 3-4 x 2-3mm.

**Spread by:** Vegetatively and by seed dispersed by water and in contaminated soil.

**Control:** Removing whole crown is the most effective manual control method. Tangled growth may need to be cleared using brush cutter. Foliar spray using approved herbicide is also effective.



Sources: MRPMG, 2013. Weeds of the Mackay Whitsunday Region. Department of Agriculture and Fisheries & Biosecurity Queensland. Siratro Fact Sheet. Siratro, DAF, <[https://www.daf.qld.gov.au/\\_\\_data/assets/pdf\\_file/0003/65289/siratro.pdf](https://www.daf.qld.gov.au/__data/assets/pdf_file/0003/65289/siratro.pdf)>.

Image: S & A Pearson



## Upcoming Community Events

### November

**Tues 1** - PCL Volunteering in the nursery, 8am to 12pm.

**Thurs 3** - Native Plants Queensland (Mackay Branch) meeting 7:30pm at Mackay Regional Gardens Meeting Room

**Tues 8** - PCL Volunteering in the nursery, 8am to 12pm.

**Thurs 10** - Small Acreage Roadshow, Habana Community Precinct, 1091 Mackay Habana Road, Habana, 9am to 1pm.

**Tues 15** - PCL Volunteering in the nursery, 8am to 12pm.

**Thurs 17** - PCL Annual General Meeting—All welcome, Wetland Walkabout, Keeley's Road Andergrove, 9:30am to 11:30am.

**Tues 29** - PCL Volunteering in the nursery, 8am to 12pm.

### December

**Thurs 1** - Native Plants Queensland (Mackay Branch) meeting 7:30pm at Mackay Regional Gardens Meeting Room

**Tues 6** - PCL Volunteering in the nursery, 8am to 12pm.

**Fri 9** - PCL Litter monitoring day, 9am Caneland Central roundabout, Mastuura Drive, Mackay.

**Sat 10** - PCL litter monitoring day, 9am The Surf Club Mackay, East Point Drive, Mackay Harbour.

**Tues 13** - PCL Volunteering in the nursery, 8am to 12pm.

**Tues 20** - PCL Volunteering in the nursery, 8am to 12pm.



**PCL'S ID:**  
**C10041933**

### **VOLUNTEERING OPPORTUNITIES**

Keen to volunteer with PCL? We are looking for new volunteers keen to get involved in Landcare planting activities at beautiful locations! Come join us! Contact [projectofficer@pioneercatchment.org.au](mailto:projectofficer@pioneercatchment.org.au) for more information.

There are no longer restrictions in place for new volunteers for propagating activities at the MNEC nursery. Existing and new volunteers are welcome.

### **Pioneer Catchment & Landcare Group Inc.**

#### Executive

**Chair** | Sharon Dwyer

**Deputy Chair** | Judith Wake

**Secretary** | Fran Mann

**Treasurer** | Claire Stribbles

#### Committee Members

Earl Neilsen

### **Pioneer Catchment & Landcare Group Inc.** **Office contacts:**

**Phone** | 07 4944 1979

**Email** | [admin@pioneercatchment.org.au](mailto:admin@pioneercatchment.org.au)

**Website** | [www.pioneercatchment.org.au](http://www.pioneercatchment.org.au)

**Coordinator** | Nancy Pratt  
[coordinator@pioneercatchment.org.au](mailto:coordinator@pioneercatchment.org.au)

**Project Officer** | Sally Stutsel  
[projectofficer@pioneercatchment.org.au](mailto:projectofficer@pioneercatchment.org.au)

**Administration and Marketing Officer** | Taleah Virgona  
[admin@pioneercatchment.org.au](mailto:admin@pioneercatchment.org.au)

**Newsletter** | Hannah Murphy  
[communications@pioneercatchment.org.au](mailto:communications@pioneercatchment.org.au)

## Meet the Team

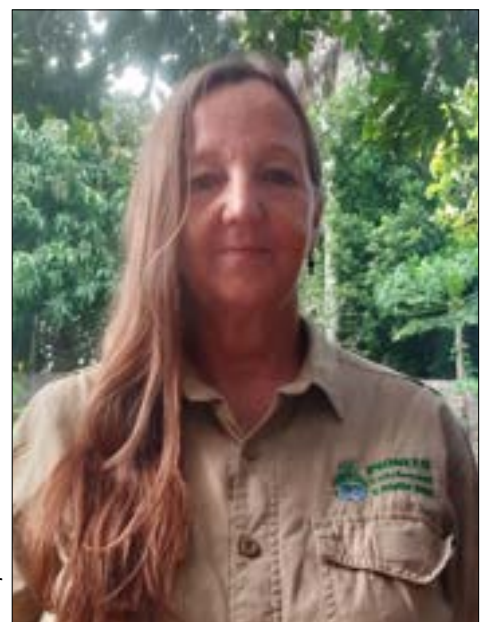
### **Sally Stutsel—Project Officer**

Sally Stutsel joined the team at PCL in June. She has a Bachelor's degree in Environmental Science and a Graduate Certificate in Environmental Management.

Before joining PCL, Sally was a Project Officer with the local NRM group Reef Catchments in the Sustainable Agriculture and Conservation and Communities teams. Originally hailing from NSW, her role as Project Leader with Wildmob brought her to Mackay. While with Wildmob, she led many conservation expeditions to the Islands off Mackay, Norfolk Island, and Tasmania. She also supported the recovery of the Bridled Nail Tailed Wallaby at Avocet Nature Refuge.

She brings to PCL strong project management experience and enthusiasm for community engagement in conservation.

As their Vice President and Scientific Officer, you might also know Sally from her volunteer work with Mackay and District Turtle Watch.



# Small Acreage Roadshow

Are you a small acreage farmer?

Would you like to find out more about maintaining the health & wellbeing of the animals and land in your care?

If so, come along to a workshop/seminar near you!



Thursday 10th November, Habana Community Precinct  
1091 Mackay Habana Road, Habana QLD 4740



9am - 1pm

To register:

<https://www.eventbrite.com.au/e/440746734347>

For more information call (07) 4944 1979

[admin@pioneercatchment.org.au](mailto:admin@pioneercatchment.org.au)

Bring a plant in and swap for a native, and  
a poorly performing soil sample for a basic slaking, dispersion  
and pH tests

Small Livestock and Animal Health

Sustainable Land Management

Pest management and Biosecurity

*This event is supported by Reef Catchments through funding from the Australian Government's National Landcare Program.*