



The Understory

Pioneer Catchment Landcare News

Summer 2026 Edition



Growing sustainable futures

 www.pioneercatchment.org.au
 admin@pioneercatchment.org.au



PIONEER
Catchment
LANDCARE

THIS EDITION

In Focus: PCL takes on Wetland Walkabout

Page 3 - 4

Landcare in the community

Junior Landcare
and community
group support

Page 8 - 9

Environmental Services

TC Koji delivers both
sweet relief and
sorrow across our
sites

Page 10

AGM

Celebrating PCL
members,
stewardship, turtles
and trees

Page 5 - 6

Conservation

PCL's work to
protect *Bertya
pedicellata*

Page 7

Welcome to New Staff: Leah Lacey, Earl Neilsen and
Levi Wallace Page 11

Plant of the Month: In Flower Now - Firewheel Tree
Stenocarpus sinuatus Page 12

Pest of the Month: Phytophthora explored Page 13

Get involved: Join in Clean Up Australia Day at
Harbour Beach, Urban Oasis Community Planting
Day and Wetland Walkabout Working Bees plus
sponsorship opportunities, general and corporate
memberships Page 14 - 19



PIONEER
Catchment
LANDCARE

In Focus

Wetland Walkabout

Summer 2026

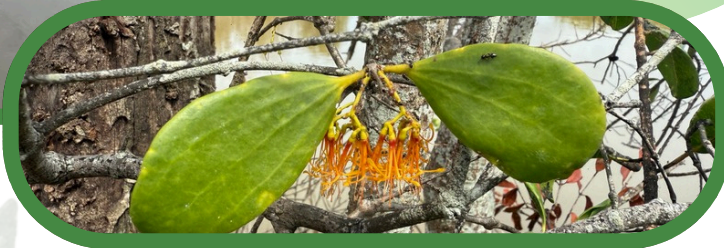


As Wetland Walkabout's new managers, Pioneer Catchment Landcare will transform the site into a thriving hub for environmental education, research, and community-led conservation.



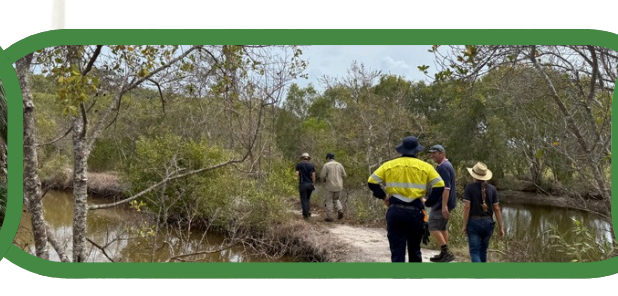
A bit of background

PCL was approached by landowner Chris in the latter part of 2025 to explore whether we could take on the ongoing management and maintenance of this important wetland and community space. Following positive discussions, an agreement was reached, and we were delighted to officially take over the site just before Christmas – a truly special end-of-year gift.



Objectives

- **Caring for the Wetland** – We'll carry out hands-on conservation and restoration work such as controlling invasive weeds, improving habitat, and maintaining key site features to support healthy ecosystems and protect the rich biodiversity of the tidal wetland.
- **Looking After the Site** – We'll improve and maintain site infrastructure, including stabilising walking tracks, upgrading bridges, and providing environmentally responsible facilities. This ensures the area remains safe, welcoming, and easy to access, while continuing to function as a healthy wetland.
- **Learning From the Landscape** – We'll support ongoing research and monitoring to better understand how mangroves, saltmarshes, water flows, and wetland wildlife interact over time. This information will help guide future management and contribute to broader regional conservation efforts.
- **Learning Together** – We'll offer engaging education programs, guided walks, and hands-on volunteer opportunities that help local schools, community groups, and visitors learn about wetlands and play an active role in caring for this special place.
- **Stewardship Planning for the Long Term** – We'll seek ongoing support through grants, partnerships, and sponsorships to fund site maintenance, research, and education programs. This helps ensure the wetland remains healthy, well-managed, and protected into the future.
- **Strengthening the Wetland's Connections** – We'll work to protect and enhance the natural water flows and habitat links between Apsley and McCreedy's Creek. Keeping these systems connected supports wildlife movement, strengthens ecosystem resilience, and helps the wetland adapt to environmental change.



Wetland Walkabout continued...

Our vision

- **Connecting People With Nature** - A network of thoughtfully-designed walking tracks will guide visitors through wetlands and surrounding natural areas, offering safe and inclusive access while protecting sensitive habitats. Ongoing care will ensure these pathways remain welcoming, resilient, and kind to the environment.
- **Bridging the Landscape** - Bridges crossing tidal channels and wetland areas will continue to provide seamless connections along the track network, allowing people to move through the landscape while preserving natural water flows and wetland function through regular monitoring and maintenance.
- **A Place to Gather, Learn and Share** - The undercover area will serve as a flexible hub for workshops, school programs, community activities, and research, supporting learning, collaboration, and connection in all weather conditions.
- **Sustainable Visitor Facilities** - Existing toilet amenities will be upgraded over time to environmentally sustainable systems, such as low-water or composting toilets, reducing the site's ecological footprint while meeting visitor needs.
- **Spaces for Community and Celebration** - Open grassed areas with picnic and lunch tables will continue to provide welcoming spaces for informal gatherings, outdoor learning, and community events, strengthening the site's role as a shared place for people to come together and enjoy the landscape.



And a few challenges

Caring for a wetland and community space is incredibly rewarding, but it also comes with ongoing challenges that require careful planning and action.

- **Bridges:** The bridges that span the wetlands and tidal channels are essential for keeping walking tracks connected and visitors safe. These structures require repairs to ensure they are structurally sound. Maintaining them is not just about access - it's also about preserving the natural flow of water and the ecological connections that support wetland wildlife.
- **Invasive Plant Management:** Invasive plants are a constant threat to the health and biodiversity of the wetland. Queensland pepper trees, along with garden escapees such as periwinkle and bromeliads, can outcompete native species and disrupt the ecosystem. ***We'll be holding some community days to help us with this one, come along for a cuppa, a guided walk and a spot of weed removal!***
- **Community Action:** Tackling these challenges is not something we do alone. Volunteers, PCL members and our community play a vital role in supporting us. Every tree planted and weed removed contributes to the long-term resilience and beauty of our natural environment.

By addressing these challenges proactively, we can ensure that this wetland remains a safe, vibrant, and thriving space for both wildlife and people for years to come.



AGM

In review

AGM overview

Our Annual General Meeting was held at the Seabreeze Tavern in Slade Point and was well attended by members, volunteers, and industry professionals. The evening was a wonderful opportunity to reflect on and celebrate the incredible work achieved over the past 12 months, with PCL staff delivering more than 20 projects across the region. It was also a chance to acknowledge the ongoing support of our members, corporate partners, volunteers, and industry professionals, whose collective efforts have helped deliver meaningful outcomes for our environment. The atmosphere was one of pride, appreciation, and shared commitment to continuing this important work into the year ahead.



PCL Projects 2024 - 2025

Grant funded

- Melba House
- Pioneer Valley Rail Trail (PVRT)
- Engaging Science
- WIRES
- Wellness in the Wilderness
- Annual Platypus Count
- Bee Hotels and Habitats

- Mackay Regional Council
- Land for Wildlife
 - Landcare Support

Environmental Services

- Clarke Creek
- Fiery Creek
- Bertya pedicellata
- Eton Range Fauna Crossing
- Ring Road Rehabilitation
- Janes Creek

QPWS

- Homevale NP
- Redcliffevale NP

Environmental Services cont.

- Tangaroo Blue
- MRC Bushland Maintenance
- McEwens Beach

Reef Catchments

- Reef Assist
- East Point



Summer 2026



Welcome to our Committee



Chair
Kirili Lamb

A communications and stakeholder engagement manager working in agriculture advocacy, Kirili has a 30-year career across journalism, community, environment, theatre & events management, and health/rehabilitation, building from a B.Arts across philosophy, drama and sociology.



Deputy Chair
Vanessa Boettcher

Certified Environmental Practitioner (CEnvP) and a *Suitably Qualified Person* for the purpose of Protected Plant surveys under the Nature Conservation Act 1992. Vanessa is an ecologist and environmental scientist with 20 years' experience in that field, working across government, industry, private consulting and not-for-profit organisations.



Secretary
Jessica Turchet

Holding a B.Environmental Science, Jessica's focus is on the agriculture industry, engaging with landholders on best practice land management. Currently works in the Queensland Government Department of Primary Industries Agvet chemicals and contaminants team.



Treasurer
Claire Stribbles

Agribusiness banker, with a career spanning nearly 20 years in commercial and agribusiness across rural Victoria and Queensland, Claire brings strong business and financial skills to the table, combined with a personal interest in agriculture and the natural environment.



Committee Member
Margaret Lane

Margaret has been involved with Landcare since 2000 as both an employee and a volunteer. In her role as Councillor at Mackay Regional Council, she was integral in the development of PCL, Reef Catchments and the implementation of the Natural Environment Levy which provided funding for Landcare groups and the Land for Wildlife program.

AGM continued

Summer 2026



A giant thank-you to all those who have supported us over the last 12 months

Guest Speaker and Corporate Sponsor: Mackay & District Woodchopping Association

We were thrilled to hear from Wade and Takiah of the Mackay & District Woodchopping Association, who gave an inspiring talk on both the physical and environmental benefits of woodchopping as a sport. Takiah, a world champion, shared insights from her experience, demonstrating skill, dedication, and passion. As generous corporate sponsors, the Mackay Woodchoppers are eager to support our efforts on the ground, including helping with the removal of invasive African Tulip trees.



2 Guest Speakers

Guest Speaker: Steve Fisher – Mackay and District Turtle Watch

We were delighted to welcome Steve Fisher from Mackay and District Turtle Watch, who shared his insights on the vital role of dune vegetation in supporting turtle populations. Steve highlighted the challenges turtles face, including the impacts of feral and domestic animals on nesting sites. He also discussed the positive outcomes observed since the closure of East Point to vehicles, demonstrating how simple management actions can make a big difference for wildlife conservation.



Projects report

Our projects report detailed work spanning the last 12 months and showcasing 22 projects from a one-day workshop to a two-year protected plant program.

Our project partners and funders include WIRES, QWPS, DETSI, Mackay Regional Council, Reef Catchments, Tangaroa Blue to name a few. We thank all our sponsors, amazing staff, members and volunteers who make our projects possible!



Lifetime membership award

Our 2025 lifetime membership award was presented to Margaret Lane, who has been at the heart of environmental conservation in Mackay for many years, including PCL. Her dedication, passion, and tireless commitment to protecting our natural environment have made a lasting impact – not just on the landscapes she has worked to preserve, but on the people she has inspired along the way. We celebrate Margaret not only for her countless achievements but also for the spirit she brings to our community. Her dedication reminds us that meaningful change is built through perseverance, collaboration, and a genuine love for the environment. It was also great to see Margaret put her hand up at the AGM to re-join the PCL Management Committee!

Protected Plant Program

Bertya pedicellata

Summer 2026



Update



Our *Bertya pedicellata* translocation program has been well underway, with 82 plants successfully relocated from a proposed road development site between Coppabella and Moranbah. As part of the project, we also introduced ten nursery-grown plants to the recipient site as a trial, testing whether our carefully nurtured plants could withstand the harsh summer conditions of the coalfields. The program has been both challenging and fascinating, requiring our team to adapt management approaches along the way. We navigated extreme heat, with temperatures exceeding 40 degrees, followed by intense monsoonal rainfall after Cyclone Koji – conditions that threatened to wash away plants and carefully constructed planting beds. Despite these challenges, all plants have been accounted for except for one very small individual, a strong result under such demanding conditions.



Notes and statistics

- 52 (63.4%) of our translocated plants were larger plants, being between 1.5m and 3m in height
- 30 (36.6%) of our plants were smaller juveniles between 0.1m and 1.5m in height
- All (100%) the large plants died
- Only 10 (33%) of the smaller plants died
- 10 nursery plants have been added to the recipient site as a trial

Each *Bertya pedicellata* plant is assigned a unique identification number that stays with it for its entire life and is recorded in our purpose-designed accessioning system. We carefully document as much information as possible, including plant health, collection dates, propagation history, translocation details, and, where relevant, plant loss. This detailed record-keeping allows us to build a clearer picture of how this species responds to different conditions and management approaches.

By tracking each plant's journey so closely, we're not only improving the success of this translocation program but also contributing valuable knowledge to the conservation of a little-studied species – helping to inform and strengthen future efforts to protect *Bertya pedicellata* in the wild.



Photos
Top: PCL water pod
Bottom left: Root ball of nursery plant
Bottom middle: Accessioning numbers at recipient site
Bottom right: *Bertya* plants at the recipient site

Landcare Support

Summer 2026



Junior Landcare

Has your school been part of our program yet?

We still have a few spaces left for schools to book a visit from our staff before June!

Did you know:

- Schools, kindy's and playgroups are entitled to 50 free native plants
- PCL staff can help your school with a design, plant choices suitable for your project and planting
- We cover any topic that fits within the curriculum in interactive sessions
- Some of the sessions we have facilitated include
 - Soil testing and soil science
 - Plastic pollution and solutions building
 - Erosion and deposition
 - Bush tucker
 - Species survival and extinction with solutions mapping
 - Sustainability
 - Composting and worm farming
 - Native bees and pollination
 - Plant deficiencies



Interested? Want to find out more?

Contact us today

Email

community@pioneercatchment.org.au

Call

0408 564 435

Check out our website

<https://pioneercatchment.org.au/>



KICKSTART YOUR SCHOOLS' LANDCARE GOALS IN 2026

✨ FREE Landcare School Support Program ✨

Be a part of Junior Landcare!

Pioneer Catchment Landcare offers free support to schools and kindergartens across the Mackay region to help turn environmental learning into hands-on action!

We're here to inspire young minds and green your school grounds with exciting activities and expert support:

- ✓ Expert advice and guidance for school revegetation and habitat projects
- ✓ Support for fun and educational events like tree planting, clean-up days, and biodiversity walks
- ✓ FREE native plants, garden design help, and plant selection assistance
- ✓ Classroom-friendly presentations on pollinators, species survival, and biodiversity

Recently we've helped local students with:

- 🌱 Soil science workshops to explore what's beneath our feet
- 🐝 Native bee sessions on pollination and conservation
- 🌿 Citizen science projects that build real-world environmental knowledge

Ready to get started?

Let's create greener school spaces, support the curriculum, and nurture the next generation of environmental champions.

Get in touch with Pioneer Catchment Landcare today to plan your project!

Landcare Support

Community Landcare

Summer 2026



Need some support for your community group?

Partner With Us

We're passionate about working alongside community groups and not-for-profits to deliver meaningful environmental outcomes across our region. Whether you're planning a small local project, a community event, or a larger on-ground initiative, our team can provide practical support, technical knowledge, and hands-on assistance to help bring your ideas to life.

By partnering with PCL, you gain access to experienced staff, local ecological expertise, and resources designed to build capacity, inspire participation, and deliver lasting benefits for both people and the environment.



How We Can Support Your Group

- **On-ground support and resources** - We can provide up to 50 free native plants for eligible projects, along with advice on species selection, planting techniques, and ongoing care. Our team can also assist with tree planting activities at PCL revegetation sites and support wildlife monitoring projects that build understanding of local ecosystems.
- **Planning, design and advice** - Our staff offer landscape and site design advice tailored to community spaces, helping to create functional, attractive, and environmentally sound outcomes. We can also provide guidance on project planning and delivery, ensuring your efforts are well-targeted and achievable.
- **Events, education and engagement** - We're happy to attend community events, bringing along our mobile stall with interactive displays and hands-on activities to engage people of all ages. We also offer guided excursions and learning experiences that connect participants with local environments and conservation issues.
- **Funding and promotion support** - To help your projects succeed, we offer grant writing assistance, sharing our experience in securing funding and navigating application processes. We can also support your communications with poster and flyer design, helping you promote your activities and reach a wider audience.

Let's Work Together

If you're a community group or not-for-profit looking to make a positive difference, we'd love to hear from you. By working together, we can strengthen community connections, build environmental knowledge, and create lasting benefits for our natural landscapes.



Environmental Services

Summer 2026



Clean up from Cyclone Koji

Update

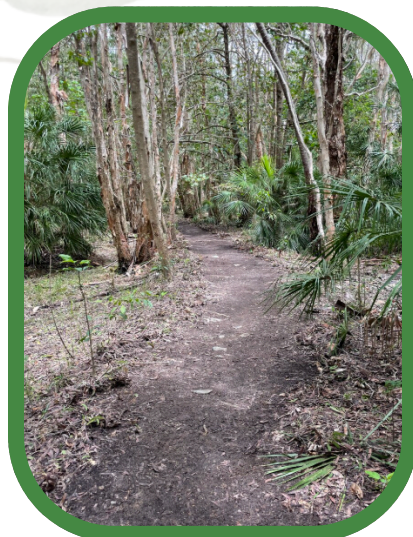
Cyclone Koji brought heavy rain and strong winds across many of our sites. While challenging in places, the rainfall proved to be a welcome boost for some of our drier areas, including Fiery Creek and the *Bertya pedicellata* recipient site.

At Fiery Creek, the additional rain triggered outstanding growth in the koala fodder trees planted as part of the carbon offset project. All 1,200 trees are now showing exceptional growth. The site has since been officially handed over, with the client expressing high praise for the achievement and the dedication of PCL staff in planting, establishing, and maintaining this important fodder habitat.

Encouragingly, koalas have already been identified in the area, including one spotted in a mature tree planted nearby. Seeing wildlife return and thrive is a powerful reminder of the impact of this work – a truly rewarding success story.

At our other sites, Cyclone Koji brought down branches, caused flood damage, and encouraged a surge in post-cyclone weed growth. Despite these challenges, our PCL staff worked tirelessly to assess and manage the impacts. In our revegetation sites, such as Melba House, many plants survived being submerged, and thanks to the care and attention of our team, these areas continue to play a vital role in reducing erosion along the steep banks of the Pioneer River.

Our Mackay Regional Council bushland maintenance sites also required immediate attention. PCL staff braved stifling humidity, swarms of mosquitoes, and intermittent rain to clear debris, repair damaged tracks, and restore safe public access to Mackay's urban green spaces. Their dedication, expertise, and perseverance ensured that these areas were reopened quickly and safely, highlighting the essential role our team plays in maintaining the health, safety, and accessibility of our local natural areas. Thanks to the commitment and hard work of our staff, our green spaces are not only recovering but are thriving, ready to continue supporting both the environment and the community.



Photos

Left: Before maintenance at Slade Point Reserve showing debris litter walking trails
Middle and right: After clean up showing cleared walking trails



Welcome to our new staff members

Summer 2026



Leah Lacey - Project Officer

I love that Landcare is where people, passion, and the environment truly come together – it's hands-on, practical, and driven by real action on the ground. Knowing that the work we do today benefits future generations and protects wildlife makes it incredibly rewarding.

Pioneer Catchment Landcare felt like a natural fit. I've always loved the environment and working alongside community groups, and PCL's strong local connections, focus on native plants, and science-based approach really stood out. Most of all, it's the people – being part of a team that genuinely cares makes all the difference.

I've loved getting out on Country, meeting landholders, visiting schools, and seeing projects come to life. It's busy in the best way, with no two days ever the same.

If I had to choose a favourite Australian animal, it would be the koala – such an iconic species and especially special to our region. My favourite plants are the lemon-scented gum (*Eucalyptus citriodora*) for its beautiful scent and presence, and native lasiandra (*Melastoma malabathricum*), a stunning and practical native alternative to its invasive counterpart.



Earl Neilsen - Coordinator Industry and Community Partnerships

Earl has moved from being an active member of our Management Committee to delivering marketing, sponsorships and general guidance and support to our field team. He has been a singer/songwriter and children's entertainer delighting young audiences for more than 20 years internationally, statewide, and locally in Mackay. During that time, he has released 2 children's albums and has been nominated twice for the TSA Songwriter Children's Song of the Year at Tamworth. For several years, Earl taught Conservation Land Management where he was a top 3 finalist for the Queensland VET Teacher Trainer of the Year. Earl is currently an ambassador and Men's Health Support Staff for the Trudy Crowley Foundation, a local charity dedicated to cancer support. Earl joined the charity after surviving Stage III colorectal cancer at age 39. Earl was born and raised in the beautiful Pioneer Valley on third generation cane farm in Septimus. He currently resides in Pinnacle where the majestic Teemburra Dam is in his backyard.



Levi Wallace - Landcare Ranger

I enjoy working outdoors, learning about nature, and being part of projects that benefit both the environment and the community. What I love most about my role is being able to take a hands-on approach to protecting Australia's natural landscapes and wildlife. I've already learned so much in my first few weeks with PCL, and the team has been incredibly welcoming and supportive.

My background and main interests are in wildlife conservation, and I'm a qualified snake catcher with a focus on the safe handling and relocation of snakes. I'm also passionate about running and compete regularly, which helps me maintain a high level of fitness – something that really supports the physical demands of working in the field.

My favourite Australian animal is the red-bellied black snake. They are not only beautiful, but also an important part of our natural environment, playing a key role in controlling pests such as rodents and helping to keep ecosystems balanced – plus, I own one!

What's most special to me about our natural environment is being able to work within it and actively protect it. Seeing native plants and wildlife thrive as a result of thoughtful land management makes this work incredibly rewarding and reinforces why caring for our environment is so important.



Plant of the Month

Summer 2026



Common name: Wheel of Fire/Firewheel tree
Botanical name: *Stenocarpus sinuatus*

Family: Proteaceae



Image: ANSPA Brian Walters



Image: Jeff Howes

Description: *Stenocarpus* is a tree to about 30–40 m but it is usually smaller in cultivation, particularly in cooler areas. It has an upright erect canopy and with a trunk potentially reaching over 70 cm in diameter. The bark is greyish brown, not smooth and irregular.

Leaves: Dark green with a leathery texture, with upper surface shiny and lower surface dull and only 1 main midvein present. They are simple leaves or leaves which are heavily lobed to appear compound and are arranged alternately. Leaf shape is highly variable, varying between oblong–lanceolate with an unlobed margin, or with margins strongly and irregularly lobed, forming a shape similar to that seen in some oak tree.

Flowers: Showy, with up to 20 bright red flowers arranged in an umbel, appearing at the branch terminals, and with flowers radiating around a disc-like structure so as to appear circular (i.e. “fire-wheels”), appearing mostly between February to March. Flowering can be very dramatic.

Fruit: Produced as a follicle, boat-shaped, to 10 cm long. Inside are many thin seeds to 25 mm long, maturing from January to July.

Growing notes: Despite its sub-tropical to tropical origin, *S.sinuatus* is adaptable to a range of climates and will even succeed in dry climates if additional water is available. It prefers fairly rich, loamy soils but is tolerant of most well drained soils. It may be grown in a sunny or partly shaded location.

Uses:

Ornamental tree.

Name origin:

Stenocarpus – From Greek *stenos*, narrow and *carpos*, a fruit, a reference to the characteristics of the seed capsules

sinuatus – From Latin *sinuatus*, wavy, a reference to the margins of the leaves

Reference: https://anpsa.org.au/plant_profiles/stenocarpus-sinuatus/
<https://resources.austplants.com.au/plant/stenocarpus-sinuatus/>

Pest of the Month

Summer 2026



Common name: Plant destroyer

Family: Oomycota

Botanical name: *Phytophthora spp*



Image:

<https://www.business.qld.gov.au/industries/farms-fishing-forestry/agriculture/biosecurity/plants/diseases/horticultural/apaya-phytophthora-diseases>

Description: Phytophthora spp are water moulds and although considered fungal are actually more closely related to plants than fungi, with its cell wall made of cellulose not chitin.

The first species reported in Australia in 1900 was *Phytophthora infestans*. Routine and targeted surveys within Australian natural ecosystems have resulted in the description of 27 species since 2009. The distribution of records is skewed toward regions with considerable activity in high productivity agriculture, horticulture and forestry, and native vegetation at risk from *P. cinnamomi*. These include Eucalyptus woodlands, Kauri pine, Banksia and other Proteaceae family, Xanthorrhoea species amongst others.

It lives and spreads through movement of infested soil and attacks plant roots, causing severe root rot or dieback. Plants can be infected for years before they start to show symptoms, making it challenging to detect early and prevent it spreading. Once an area is infected with Phytophthora, eradication is not possible. Containment and prevention of further spread is key to effective management of this pathogen.

Habitat: Any activity that moves soil, water or plant material can spread Phytophthora – this includes recreational activities such as bushwalking, off-road vehicle use and gardening, as well as other activities such as road building, land management, timber harvesting and mining. *P. cinnamomi* thrives in temperatures of 15–30 degrees and where rainfall exceeds 400 mm.

Environmental threats: *P. cinnamomi* causes severe disease that threatens the survival of hundreds of Australian native plants. Infected plants often lose their ability to develop new shoots, flowers, fruit and seeds. The disease often infects new plants and can completely exhaust a species' seed bank, leading to local extinctions. Of 30 known populations of the critically endangered *Banksia brownii*, for example, 10 are presumed extinct and 13 have fewer than 100 plants due to this disease. The species has lost 38% of its genetic diversity. Other threatening processes (fire, herbivory, other diseases and climate change) interact with *P. cinnamomi*, increasing the risk of extinction. *Phytophthora* dieback severely degrades ecological communities. Banksia and eucalypt woodlands are highly susceptible to the disease, which can dramatically alter structure and composition of plant communities and reduce primary productivity and functionality. *Phytophthora* dieback can cause permanent loss of habitat and food for native animals. At least 14 nationally threatened animal species are thought to be impacted. *Phytophthora* dieback threatens areas of national and international significance including world heritage areas, national heritage areas, national parks, and Ramsar wetlands. These are often popular or well-known destinations with large numbers of visitors who have spread the disease.

Control: To minimise spread of the disease from one site to another, it is important to ensure that footwear, tools and vehicles are always clean on arrival and departure, to source pathogen-free material and plant stock and dispose of garden waste carefully. Clean all soil off footwear, hiking poles, backpacks and other gear every time you enter and leave a natural area. Keep a spare pair of shoes in your car. Use plastic bags for shoes and gear that can't be cleaned on-site. Keep to tracks and formed roads to limit the spread of soil. Avoid accessing areas that are wet as Phytophthora is spread easily through soil and water

References:

<https://invasives.org.au/wp-content/uploads/2023/01/Threats-to-Nature-Field-Guide-Phytophthora>

<https://parks.qld.gov.au/management/programs/pest-plants-animals/phytophthora>

Upcoming Events...

Summer 2026



Clean Up Australia Day

Where and when?

Sunday 1st March 2026
7am - 10am
Surf Club, Harbour Beach



Clean Up Australia Day at Harbour Beach – A Day for the Whole Family

Recent wet weather and Cyclone Koji have washed large amounts of rubbish onto Harbour Beach, impacting this beautiful coastline and threatening important turtle nesting habitat.

Plastics, fishing line, and other debris can be especially harmful to nesting turtles and hatchlings, making post-storm clean-ups more important than ever.

Clean Up Australia Day is a great opportunity to come together as a community and make a real difference. It's a family-friendly event, perfect for kids and adults alike, and a wonderful way to teach younger generations about caring for the environment while enjoying time outdoors. Whether you can spare 30 minutes or a few hours, every piece of litter collected helps protect wildlife and keep our beach healthy.

Bring the family, invite some friends, and enjoy a meaningful day by the sea while helping to restore Harbour Beach after recent weather events. Together, we can protect this special place for turtles, wildlife, and future generations.

For our budding citizen scientists, we'll also be running our regular Tangaroa Blue ReefClean monitoring on the day. This is a great chance to learn how marine debris surveys are carried out, including transect monitoring techniques, and to take a closer look at the issue of microplastics along our coastline. If you've ever been curious about how beach monitoring works or want to deepen your understanding of marine debris, come along and join us at Harbour Beach – everyone is welcome!

<https://register.cleanup.org.au/fundraisers/donnajackson/clean-up-australia-day---mackay-harbour>

A promotional graphic for Clean Up Australia Day. It features a collage of photos: a group of people gathered on a grassy area, and two people on a beach holding up a large piece of debris. The background is a blue and white wave. There are also seashells and a starfish scattered around. The text "CLEAN-UP AUSTRALIA DAY!" is prominently displayed in white on a blue background. Below it, the location and time are listed: "Harbour Beach - Mackay Surf Club Sunday, 1st March 7am - 10am". At the bottom, there is a URL: "https://register.cleanup.org.au/fundraisers/donnajackson/clean-up-australia-day---mackay-harbour". The Pioneer Catchment Landcare logo is in the bottom left, and a "Family event" icon is in the bottom right.

BUPA Landcare Urban Oasis

Where and when?

Sunday 15th March

8am - 12pm

Camilleri Park, Blacks Beach

Urban Oasis Tree Planting – Camilleri Street District Park

Join us as we help grow an urban oasis in the heart of the Northern Beaches.

Camilleri Street District Park is more than just a place to play – it's an important environmental and cultural asset connecting the communities of Blacks Beach, Eimeo, and Dolphin Heads. This 8-hectare park plays a vital role in managing stormwater, capturing overland flows before they reach nearby mangroves and estuaries, helping protect water quality and improve flood resilience downstream. Hidden within the park is a special remnant gully system, home to endangered and of concern regional ecosystems, including beautiful stands of Weeping Cabbage Palms (*Livistona decora*). These habitats provide food, shelter, and movement corridors for local wildlife, but they are under pressure from weed invasion, fragmentation, and surrounding urban edges.

That's where you come in.

By planting native trees and shrubs, we'll help buffer these sensitive areas, improve biodiversity, and reconnect habitat corridors across the Northern Beaches landscape. At the same time, we're enhancing a much-loved community space – one that brings people together through walking paths, youth facilities, dog parks, and shared outdoor experiences.

Why get involved?

- Protect local waterways and downstream mangroves
- Support endangered ecosystems and wildlife
- Help create a greener, cooler, more resilient park
- Connect with nature – right in your own neighbourhood
- Be part of a positive, hands-on community action

Bring your friends, family, or neighbours and help us plant for the future. Together, we can strengthen this unique landscape and ensure Camilleri Street District Park continues to support both people and nature for generations to come.



Urban Oasis: Community Tree Planting Camilleri Street District Park

**Sunday 15th March
7am - 10am**



Community event

Wetland Walkabout Working Bees

Coming soon – Help rehabilitate our local wetland walkabout.

As the weather begins to cool, we're excited to launch a series of regular working bees to help restore and care for our new wetland walkabout – and we'd love you to be part of it!

Our working bees will include guided walks through the wetland, opportunities to learn about local habitats and wildlife, and plenty of time to share coffee, cake, and stories with fellow volunteers. It's a wonderful way to connect with nature, learn new skills, and make a genuine difference close to home.



Wetlands are some of our most valuable ecosystems, providing habitat for wildlife, improving water quality, and helping manage flooding. However, they are also highly vulnerable to invasive weeds, which can quickly outcompete native plants, reduce biodiversity, alter water flows, and degrade important habitat for birds, frogs, insects, and other wetland species. Without active management, these weeds can overwhelm sensitive ecosystems and reduce the health and resilience of the wetland.

Through these relaxed, hands-on sessions, volunteers will help control and gradually remove invasive species such as Queensland pepper tree, bromeliads, yuccas, periwinkle, and other environmental weeds, giving native vegetation the space and resources it needs to recover and thrive.

If you're passionate about the environment, enjoy hands-on outdoor activities, or simply want to learn more about our local wetland ecosystems, these working bees are for you. Come along, lend a hand, and be part of restoring this special place – together, we can help our wetlands thrive for generations to come.



Corporate membership

Summer 2026



Join today. Actively fund conservation and landscape restoration.

Pioneer Catchment Landcare offers businesses of all sizes the opportunity to support our local community, conserve our precious environment and help make a difference in conservation with a PCL Corporate Membership.

Choose from Bronze, Silver and Gold to support our community and our environment.

Partner with Purpose – Become a Corporate Member of Pioneer Catchment Landcare

Join us in protecting what makes our region thrive – its land, water, wildlife, and community. By becoming a Corporate Member of Pioneer Catchment Landcare, your organisation will be part of a respected local movement making a real, lasting impact on our environment.

This is more than just a membership – it's an opportunity to:

- **Receive organisation naming right on events that membership fee has enabled**
- **Strengthen your ESG and CSR credentials**
- **Opportunities for your staff to engage with meaningful volunteer events**
- **Align your brand with on-ground environmental activities that matter**
- **Gain brand visibility through our events, media, and communications**
- **Demonstrate your commitment to sustainability and community values**
- **Gain community recognition for supporting Landcare and our environment**

From restoring bushland and managing invasive weeds to supporting biodiversity and educating the next generation, our work is powered by partnerships – and we'd love yours to be one of them.



Become a Corporate Member today and show your customers, staff, and community that your business backs nature, sustainability, and local impact.

Let's grow something great together!

PCL membership

Join today!



Check out our options for membership today!

There's something for everyone, whether you live in a unit, on a small house block, or on acreage, help support our environment today by becoming a member of Pioneer Catchment Landcare.

As a member, you'll support and be able to take part in:

- **Ecosystem Protection** – Tackle invasive species & restore native habitats
- **Biodiversity Conservation** – Help protect threatened species
- **Landholder Support** – Get tailored advice for sustainable land care
- **Community Education** – Attend workshops & local events
- **Volunteer Opportunities** – Join clean-ups & hands-on projects
- **Research & Monitoring** – Contribute to surveys & citizen science
- **Sustainable Practices** – Promote eco-friendly farming & reforestation
- **School & Group Engagement** – Inspire the next generation
- **Social Events** – Enjoy our annual BBQs & networking sessions

3
options



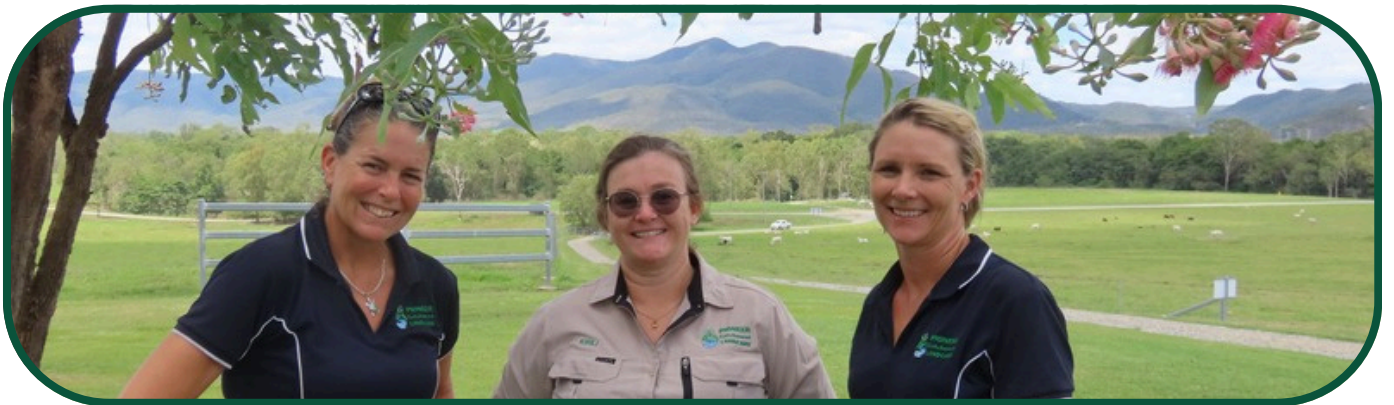
Corporate sponsors and members



Thank You *for your support*

Thank you to everyone who walks alongside us—our volunteers, partners, members, and supporters. Your passion, dedication, and belief in what we do are the heartbeat of PCL.

Together, we are creating a legacy of care for the land, for wildlife, and for future generations. We're proud of what we've achieved, and even more excited for what we'll grow together.



Scan the code to visit our
facebook page



Scan the code to visit our
membership page



Website

www.pioneercatchment.org.au



Email

admin@pioneercatchment.org.au



Location

6 Swayne Street, North Mackay 4740

Operations Manager | Nancy Pratt

operations@pioneercatchment.org.au

Coordinator Community Engagement | Donna Jackson

community@pioneercatchment.org.au



PIONEER
Catchment
LANDCARE